

Lifting Bail
 Ballast Fill Connection
 Primary Bouyancy Chamber
 Lifting Handle
 Skimmer Skirt
 P/N: SK-S
 Water Level
 36" OD

Secondary Lifting Handles
 Secondary Bouyancy Chamber

Tri Nuclear Filter Cartridge

Filter Housing

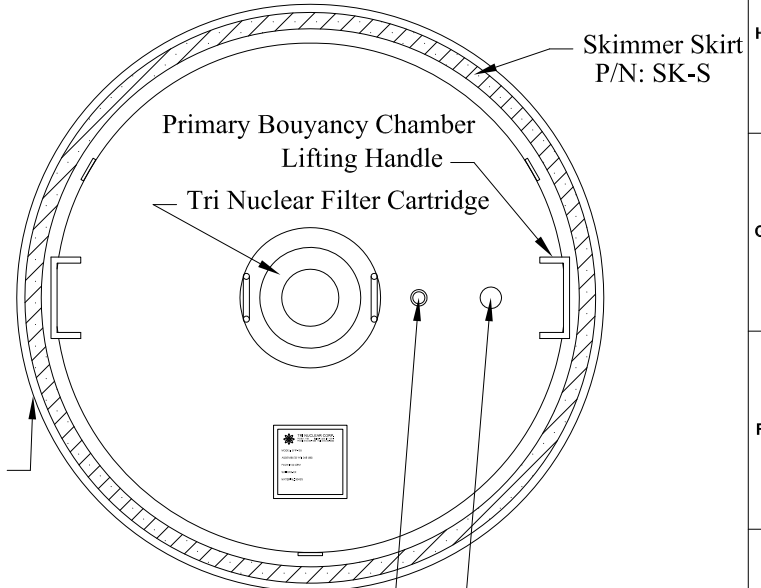
Power Cord & Flow Meter Cable

3" SS "Victaulic" Type Coupling

Pump

Flow Meter
 P/N: FM-100

Male Camlock Coupler



Skimmer Skirt
 P/N: SK-S
 Primary Bouyancy Chamber
 Lifting Handle
 Tri Nuclear Filter Cartridge
 Top View
 Power Cord &
 Flow Meter Cable
 Ballast Fill Connection

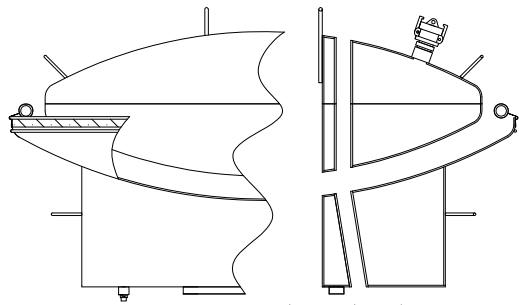
General Specifications:

- Designed for Skimming Water Surface
- 100 GPM, 1 Filter Unit
- Power Requirements: 2-1/2HP, 460V, 3 PH, 60 Hz, 3.9A
- All Material - Stainless Steel except Aluminum Pump
- System Operation: Negative Pressure
- Empty Weight (Including Pump): 245 lb.
- Weight Full of Water (Including Pump): 440 lb.
- Zip Tie Power Cord & Flow Meter Cable to Lifting Bail
- Pump with Non-Removable Power Cord
- Single Tri Nuclear Filter Cartridge

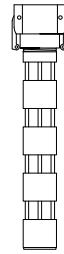
 **Tri Nuclear Corp.** 
 P.O. Box 1130, Ballston Lake, NY 12019

Skimmer / Filter / Pump Unit

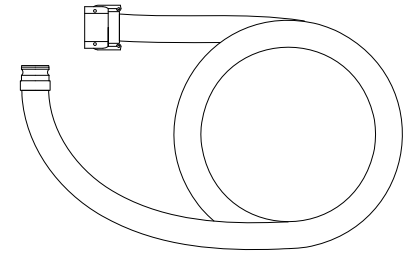
Model No. SFP-100	Rev. Date Rick Russell 08/25/17	Brochure	
Dwg. TNC-017-02	Apv'd Date James L. Warden 08/30/17	Rev. F	Page 1 of 2



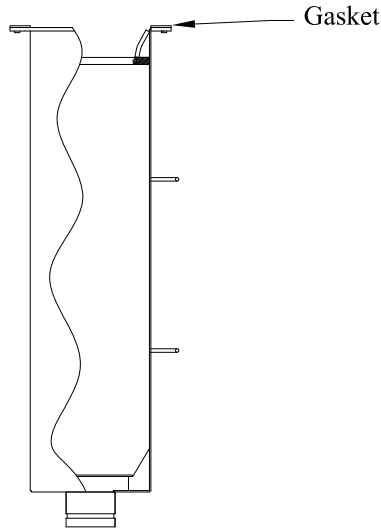
SFP-100 Upper Float Chamber



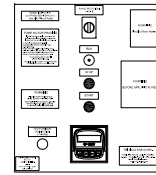
UT-8A-1.125
2" Diffuser with
1-1/8" Orifice



PH-2x10 Discharge Hose



SFP-100 Filter Housing



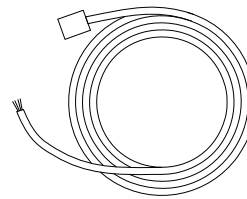
CB-100P-FM
Phase Reversing Control Box
with Integral Flow Meter



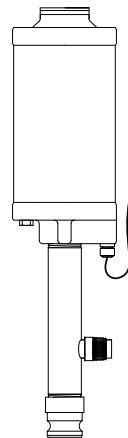
FM-SRD Flow Sensor



AS-2 Assembly Stand



PC-50 Drop Cable

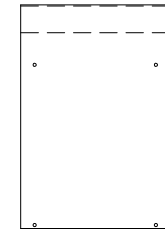


SFP-100 Pump & Discharge Nipple



Twistlock Plug

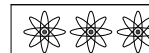
Non-Removable Power Cord, 50 Feet Long



UT-10C Mounting Panel

NOTE:

All Items Shown come with the SFP-100.



Tri Nuclear Corp.
P.O. Box 1130, Ballston Lake, NY 12019



**SFP-100 System
Part Identification**

Model No.	SFP-100	Dwg.	TNC-017-02	Rev.	F	Page	2 of 2
-----------	---------	------	------------	------	---	------	--------