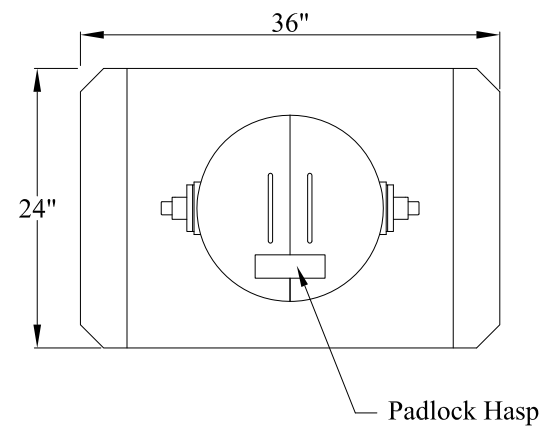
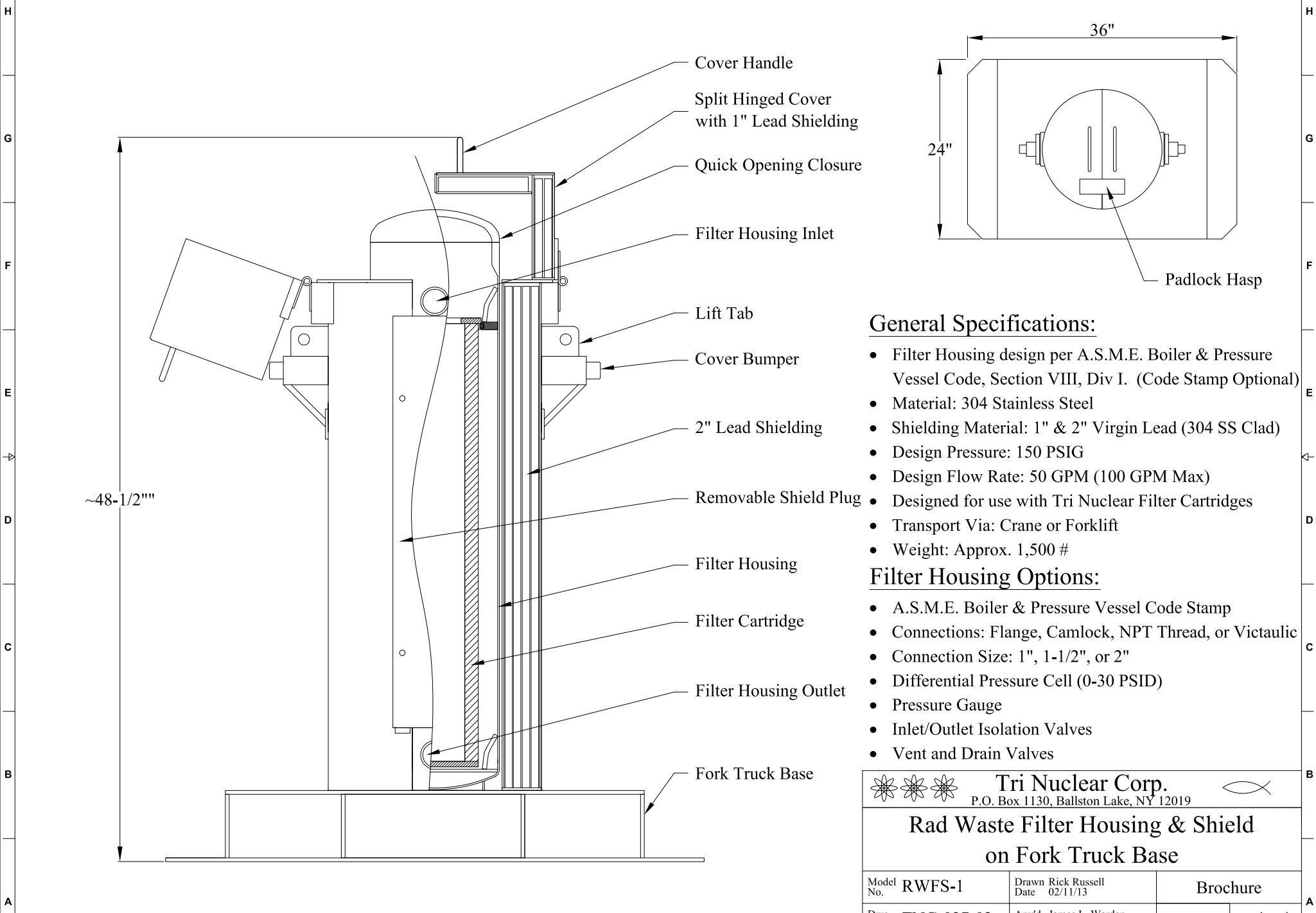


8 7 6 5 4 3 2 1





General Specifications:

- Filter Housing design per A.S.M.E. Boiler & Pressure Vessel Code, Section VIII, Div I. (Code Stamp Optional)
- Material: 304 Stainless Steel
- Shielding Material: 1'' & 2'' Virgin Lead (304 SS Clad)
- Design Pressure: 150 PSIG
- Design Flow Rate: 50 GPM (100 GPM Max)
- Designed for use with Tri Nuclear Filter Cartridges
- Transport Via: Crane or Forklift
- Weight: Approx. 1,500 #

Filter Housing Options:

- A.S.M.E. Boiler & Pressure Vessel Code Stamp
- Connections: Flange, Camlock, NPT Thread, or Victaulic
- Connection Size: 1'', 1-1/2'', or 2''
- Differential Pressure Cell (0-30 PSID)
- Pressure Gauge
- Inlet/Outlet Isolation Valves
- Vent and Drain Valves

 Tri Nuclear Corp. P.O. Box 1130, Ballston Lake, NY 12019		
Rad Waste Filter Housing & Shield on Fork Truck Base		
Model No. RWFS-1	Drawn Rick Russell Date 02/11/13	Brochure
Dwg. TNC-027-02	Apv'd James L. Warden Date 10/23/13	Rev. - Page 1 of 1

8 7 6 5 4 3 2 1