

## *UFV-600 Underwater Filter Vacuum*

Tri Nuclear has developed a large stand-alone Underwater Filter Vacuum which can process large amounts of water rapidly to establish or maintain water clarity and still retains the ability for minor vacuuming campaigns.

Tri Nuclear's Underwater Filter Vacuums can be operated for long durations practically unattended without the need for maintenance or element change out, all while controlling water clarity and reducing dose rates.

Because the portable Underwater Filter Vacuum is submerged, it needs no external shielding, or hoses running in or out of the pool that may cause rippling, poor visibility or personnel exposure/contamination.

Tri Nuclear's Underwater Filter Vacuums operate under negative pressure which allows the pump to be gravity seated and does not require any special tooling to install or remove the pump underwater.

### **Features:**

- Rapid system deployment via camlock hose connections, twist lock electrical connections, and Phase Reversing control boxes
- All stainless steel construction
- Underwater service requiring no additional shielding
- Tooling for rapid underwater remote filter change out

### **Specifications:**

- System Flow Rate: 600 GPM
- No of Filters: 4 Cartridges
- Hoses: 2 Suction or 2 Discharge
- Footprint: 24 in. x 30 in.
- Height: 99 in.
- Pump Weight: 210 lbs.
- Housing Empty with Pump: 550 lbs.
- Housing Full with Pump: 1,025 lbs.



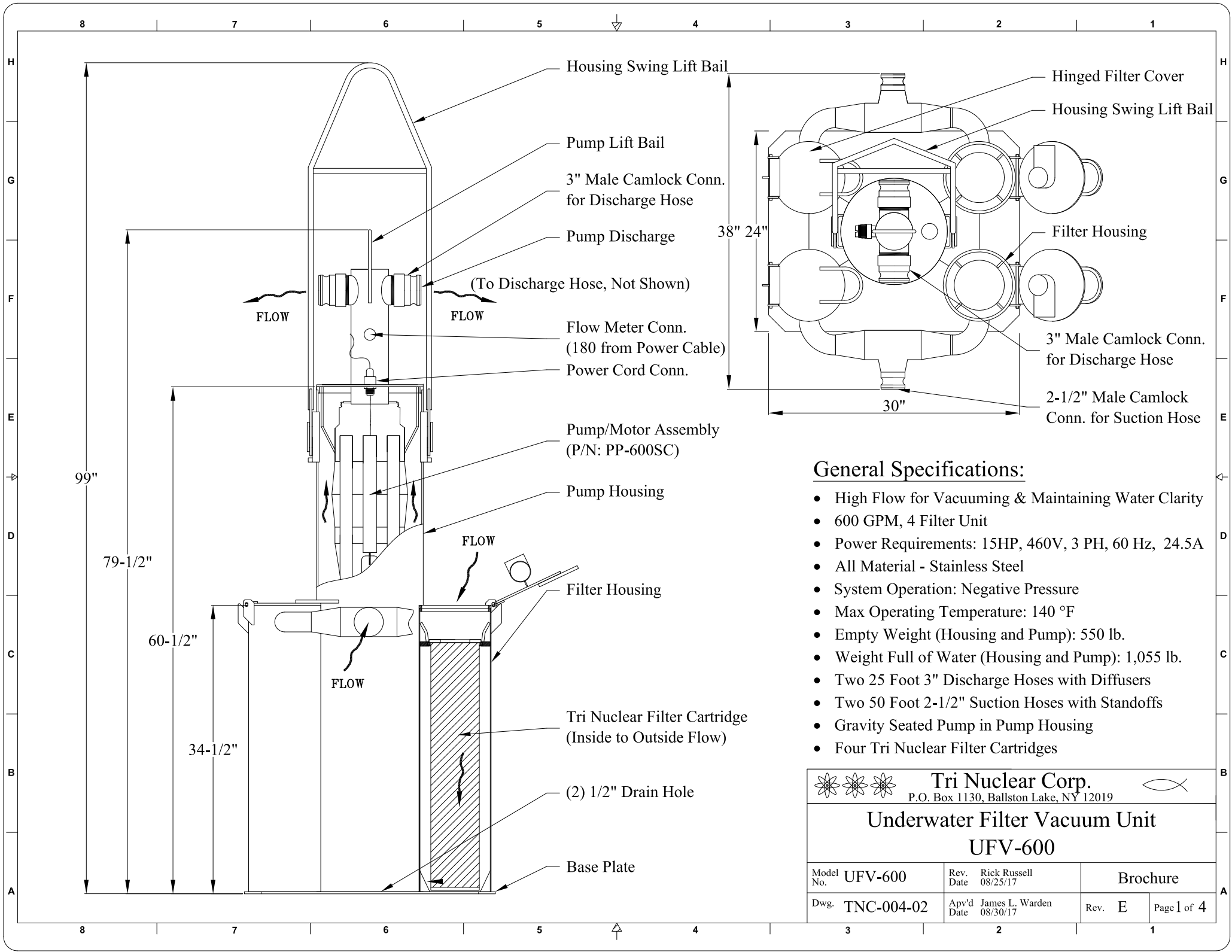
**UFV-600 Housing and Pump**

### **Filter Cartridge Design:**

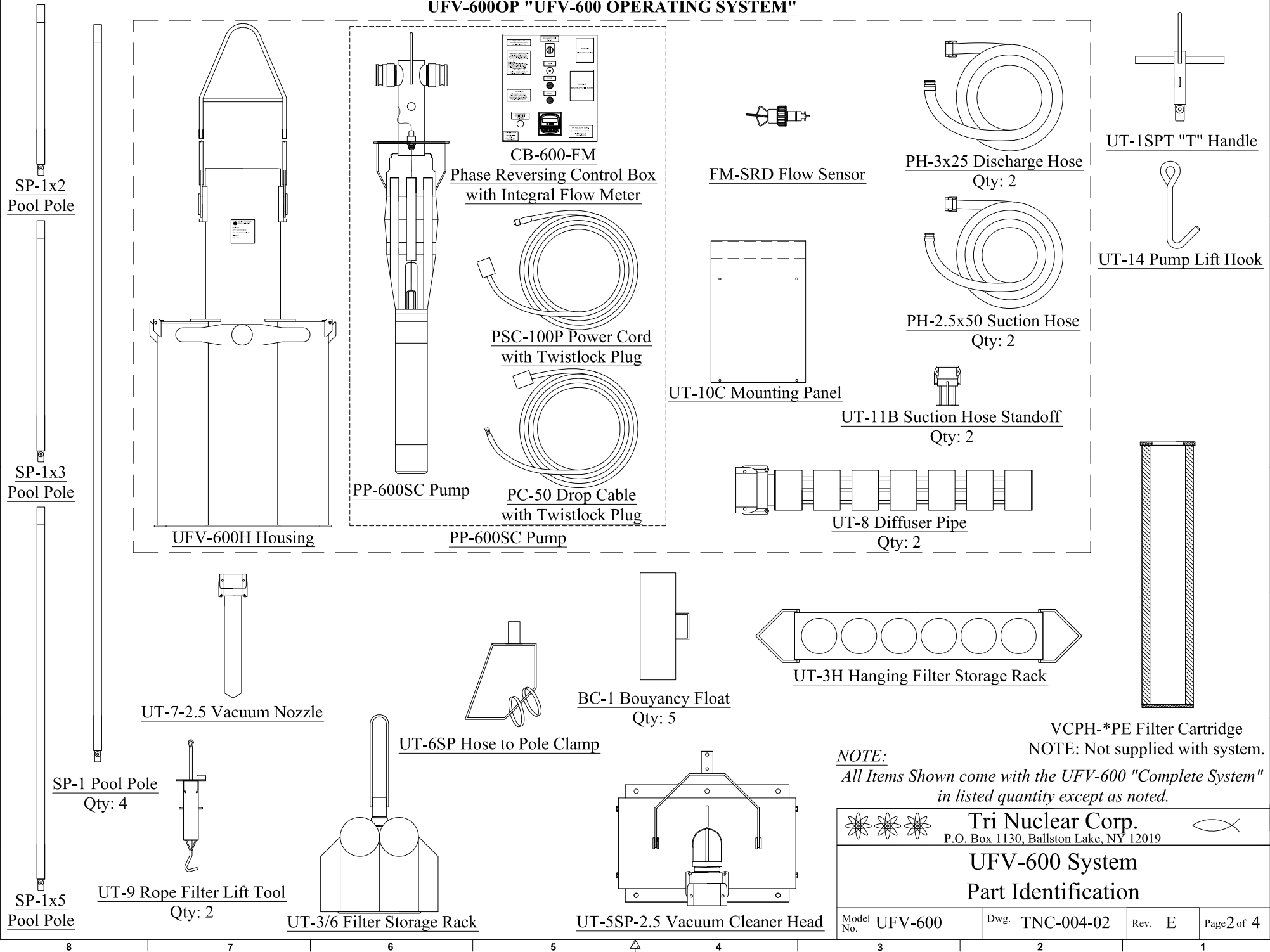
Tri Nuclear's Filter Cartridges have pleated media construction. This provides a large filter area and long run times. The filters are designed for inside to outside flow which means that solids are trapped in the element and won't flake or slough off during change out.

### **"Operating" vs. "Complete" System**



Each of the UF/UFV systems is sold in both the "Operating" and "Complete" system kits. The "Operating" system comes with only the basic components required to operate the system. The "Complete" system comes with the basic components and all accessory tooling.

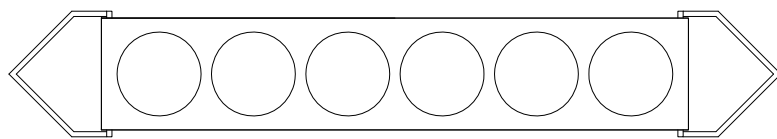


# UFV-600OP "UFV-600 OPERATING SYSTEM"



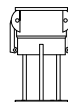
**NOTE:**  
All Items Shown come with the UFV-600 "Complete System" in listed quantity except as noted.

		<b>Tri Nuclear Corp.</b> P.O. Box 1130, Ballston Lake, NY 12019		
<b>UFV-600 System</b> <b>Part Identification</b>				
Model No.	UFV-600	Dwg.	TNC-004-02	Rev. E
		Page 2 of 4		

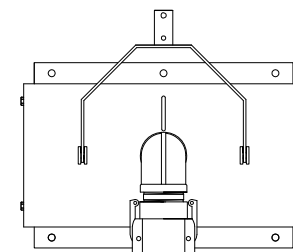


UT-3H Hanging Filter Storage Rack  
Holds (6) Tri Nuclear Filter Cartridges  
Dimensions: 42" x 8" x 4" (LWH)  
Weight: 13.5#

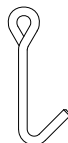
Swing Lift Bail



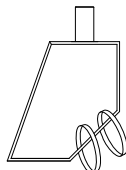
UT-11B Suction Hose Standoff  
Attaches to 2-1/2" Suction Hose (Typically PH-2.5x50)  
Dimensions: 3" Dia x 8" Lg.  
Weight: 3.5#



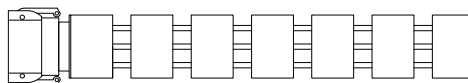
UT-5SP-2.5 Vacuum Cleaner Head  
Attaches to 2-1/2" Suction Hose (Typically PH-2.5x50)  
Dimensions: 20" x 10" x 8"  
Weight: 23.5#  
Polypro Camlock Fitting



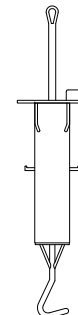
UT-14 Pump Lift Hook  
Dimensions: 4-1/2" x 5/8" x 8"  
Weight: 1#



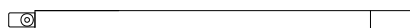
UT-6SP Hose to Pole Clamp  
Dimensions: 13-3/4" x 8" x 2"  
Weight: 2#



UT-8 Diffuser Pipe  
Attaches to 3" Discharge Hose (Typically PH-3x25)  
Dimensions: 3-1/2" Dia x 33-1/2" Lg.  
Weight: 15#



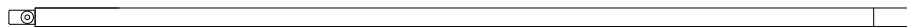
UT-9 Rope Filter Lift Tool  
Dimensions: 5" Dia x 24-3/4" Lg.  
Weight: 4.5#



SP-1x2 Pool Pole  
Dimensions: 1" Dia x 2' Lg.  
Weight: 2.5#



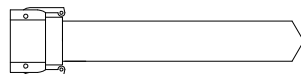
SP-1x3 Pool Pole  
Dimensions: 1" Dia x 3' Lg.  
Weight: 3#



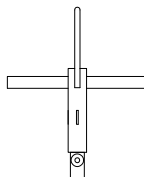
SP-1x5 Pool Pole  
Dimensions: 1" Dia x 5' Lg.  
Weight: 5#



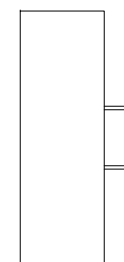
SP-1 Pool Pole  
Dimensions: 1" Dia x 10' Lg.  
Weight: 9#



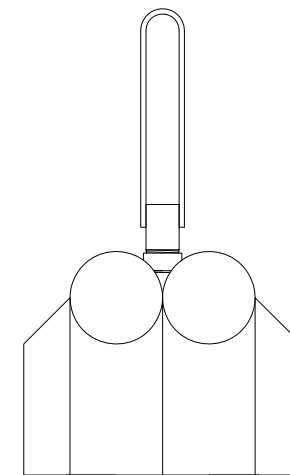
UT-7-2.5 Vacuum Nozzle  
Attaches to 2-1/2" Suction Hose (Typically PH-2.5x50)  
Dimensions: 3" Dia x 20" Lg.  
Weight: 7.5#



UT-1SPT "T" Handle  
Dimensions: 10" x 10" x 1"  
Weight: 2#

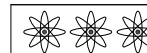


BC-1 Bouyancy Float  
Dimensions: 6" Dia x 12" Lg.  
Weight: 8.5#



UT-3/6 Filter Storage Rack  
Holds (6) Tri Nuclear Filter Cartridges  
Dimensions: 20" Dia x 33" High  
Weight: 50#

• All Material - Stainless Steel



**Tri Nuclear Corp.**  
P.O. Box 1130, Ballston Lake, NY 12019



## UFV-600 Accessory Tooling

Model No. UFV-600

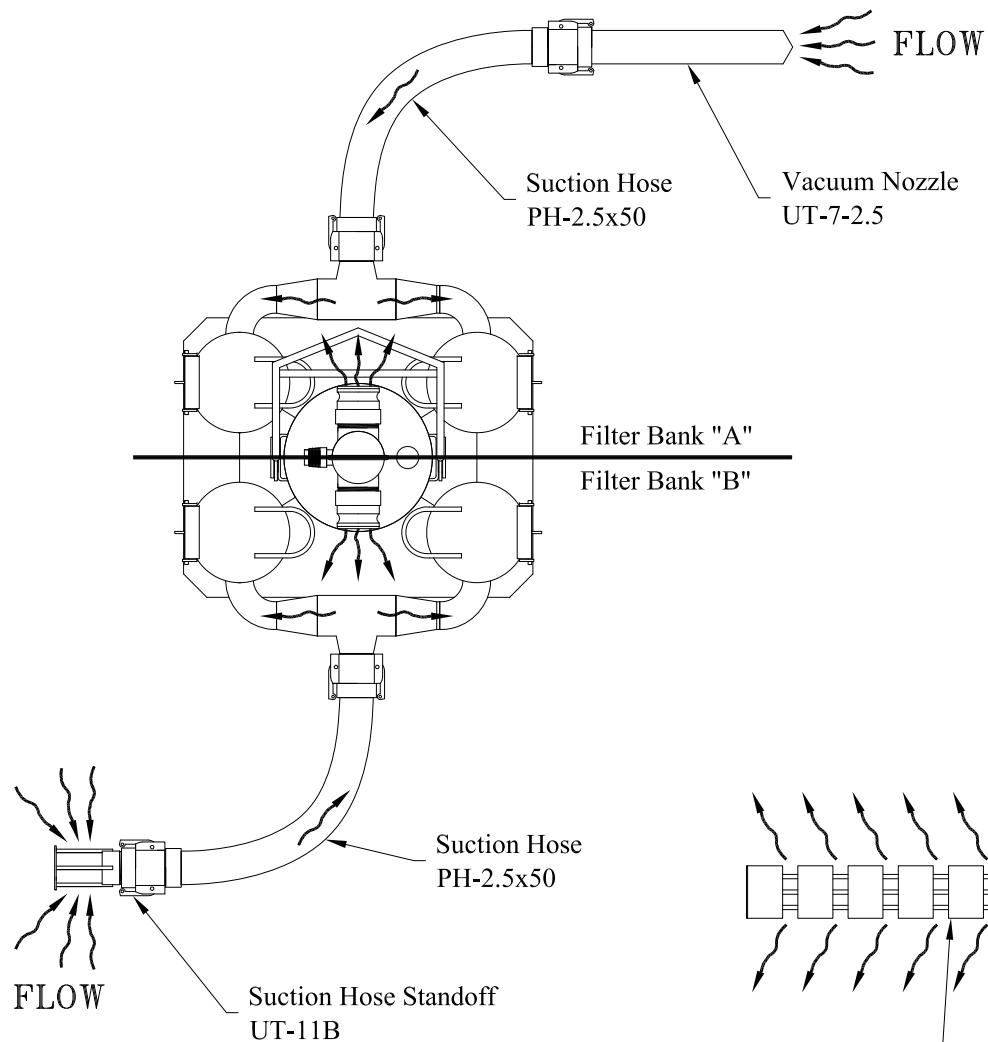
Dwg. TNC-004-02

Rev. E

Page 3 of 4

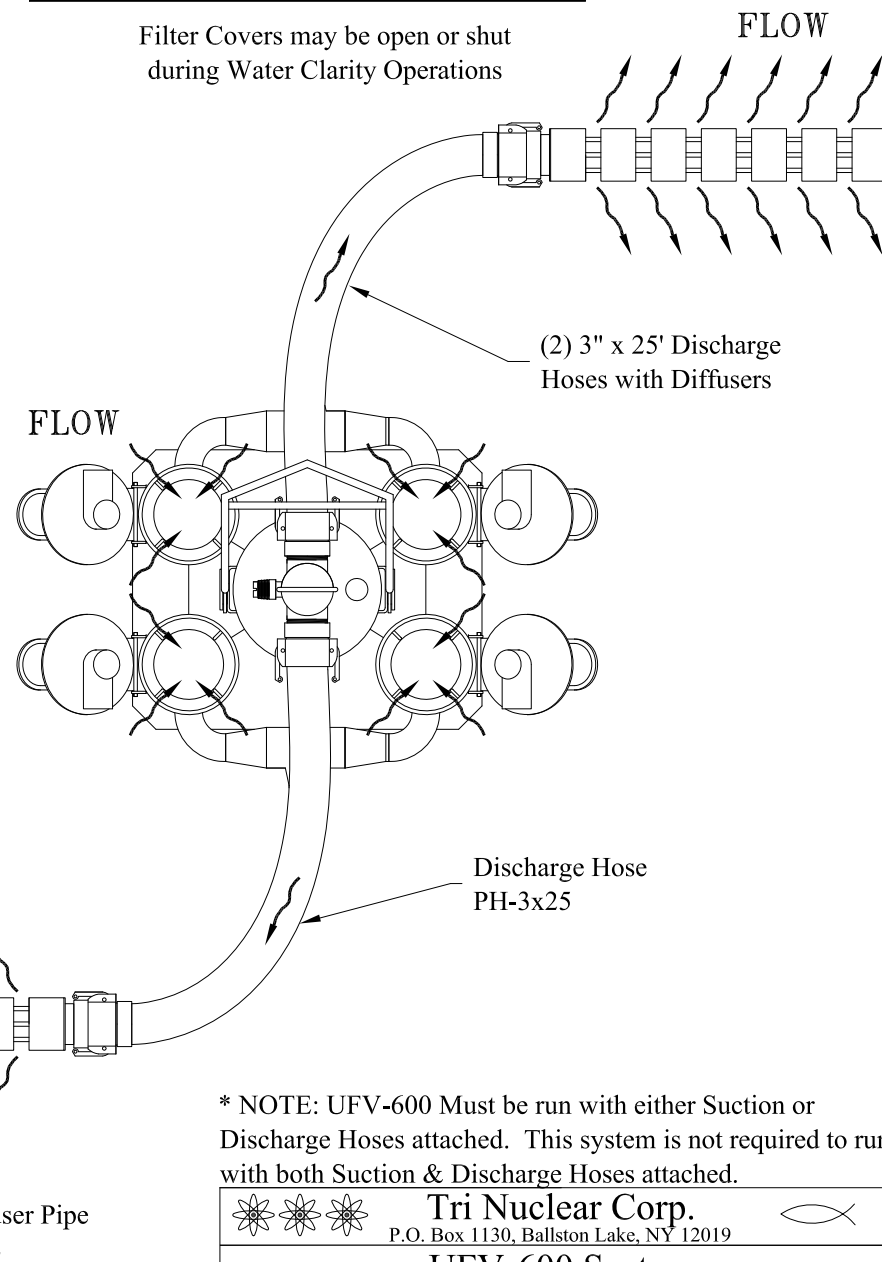
## VACUUMING OPERATIONS

NOTE: Each Suction Hose is tied to a single bank of 2 filters.  
Vacuuming with one Suction Hose can cause an imbalance in filter loading between the two banks of filters.

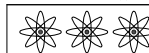


## WATER CLARITY OPERATIONS

Filter Covers may be open or shut during Water Clarity Operations



\* NOTE: UFV-600 Must be run with either Suction or Discharge Hoses attached. This system is not required to run with both Suction & Discharge Hoses attached.



**Tri Nuclear Corp.**  
P.O. Box 1130, Ballston Lake, NY 12019



**UFV-600 System**  
**Modes of Operation**

Model No. **UFV-600**

Dwg. **TNC-004-02**

Rev. **E**

Page **4** of **4**