



TRI NUCLEAR CORP.

THE INDUSTRY STANDARD IN UNDERWATER FILTRATION

WWW.TRINUCLEAR.COM -- P.O. BOX 1130 BALLSTON LAKE, NY 12019 -- TEL: 518-399-1389 -- FAX: 518-399-9586

UF-1000 Underwater Filter

The UF-1000 is the largest stand-alone Underwater Filter made by Tri Nuclear Corp. This system is specifically designed for processing significant amounts of water rapidly to establish or maintain water clarity.

Tri Nuclear's Underwater Filters can be operated for long durations practically unattended without the need for maintenance or element change out, all while controlling water clarity and reducing dose rates.

Because the portable Underwater Filter is submerged, it needs no external shielding, or hoses running in or out of the pool that may cause rippling, poor visibility or personnel exposure/contamination.

Tri Nuclear's Underwater Filters operate under negative pressure which allows the pump to be gravity seated and does not require any special tooling to install or remove the pump underwater.

Features:

- Rapid system deployment via camlock hose connections, twist lock electrical connections, and Phase Reversing control boxes
- All stainless steel construction
- Underwater service requiring no additional shielding
- Tooling for rapid underwater remote filter change out

Specifications:

- | | |
|----------------------------|-----------------|
| • System Flow Rate: | 1,000 GPM |
| • No of Filters: | 8 Cartridges |
| • Hoses: | 2 Discharge |
| • Footprint: | 34 in. x 34 in. |
| • Height: | 85 in. |
| • Pump Weight: | 235 lbs. |
| • Housing Empty with Pump: | 650 lbs. |
| • Housing Full with Pump: | 1,725 lbs. |



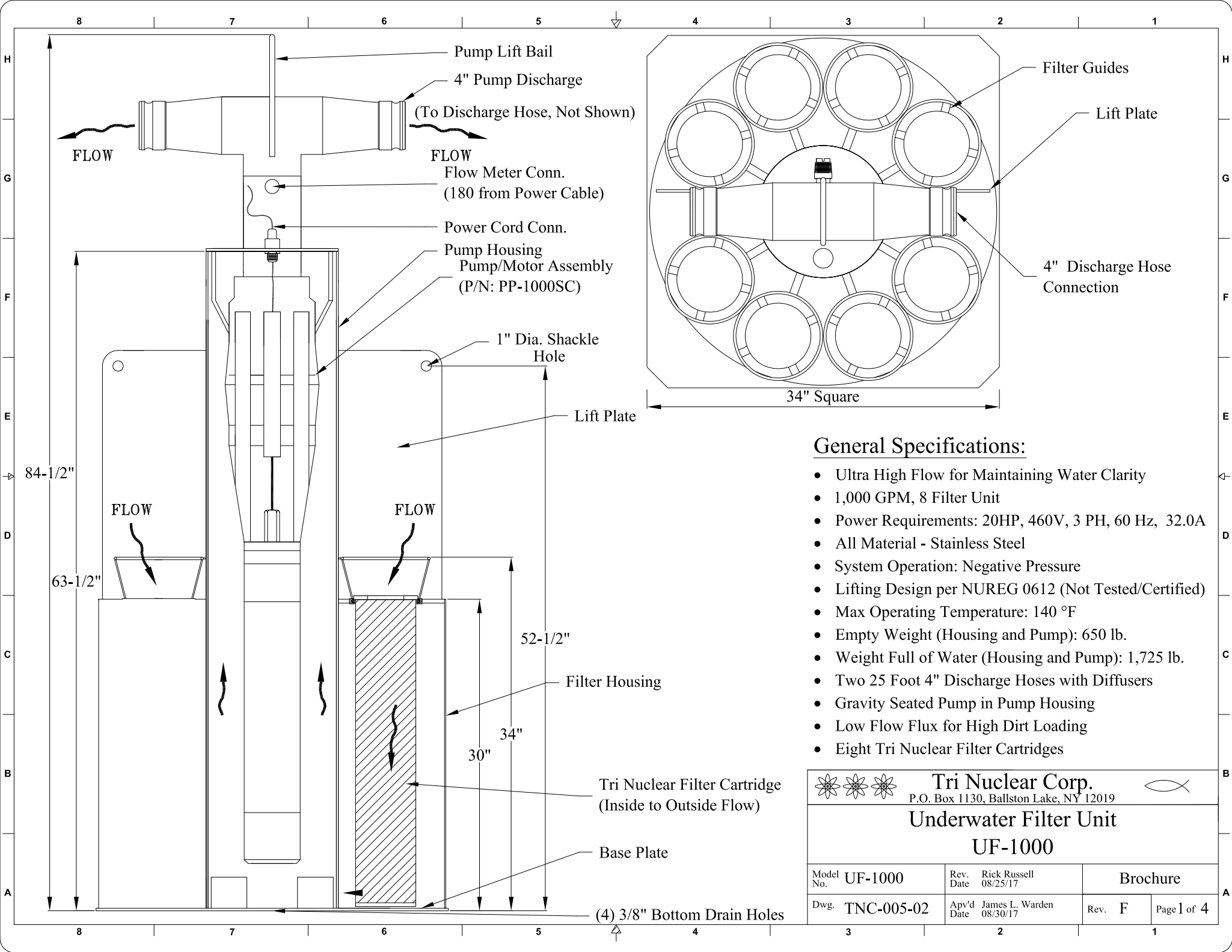
UF-1000 Housing and Pump

Filter Cartridge Design:

Tri Nuclear's Filter Cartridges have pleated media construction. This provides a large filter area and long run times. The filters are designed for inside to outside flow which means that solids are trapped in the element and won't flake or slough off during change out.

"Operating" vs. "Complete" System

Each of the UF/UFV systems is sold in both the "Operating" and "Complete" system kits. The "Operating" system comes with only the basic components required to operate the system. The "Complete" system comes with the basic components and all accessory tooling.

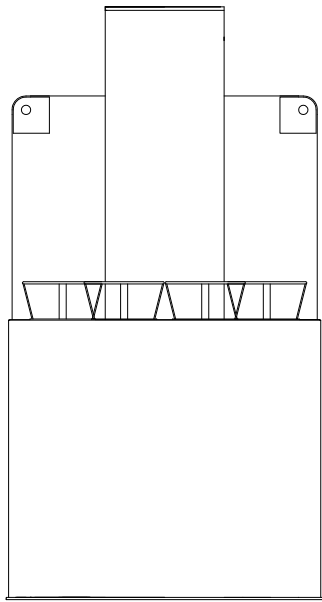


General Specifications:

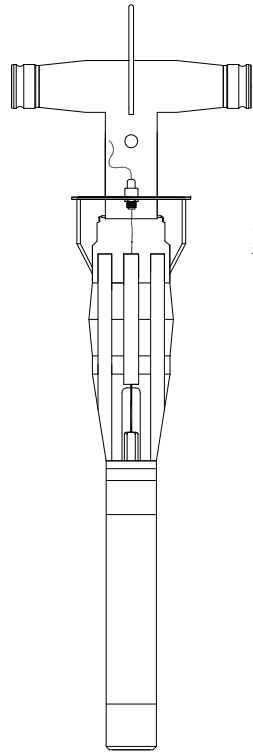
- Ultra High Flow for Maintaining Water Clarity
- 1,000 GPM, 8 Filter Unit
- Power Requirements: 20HP, 460V, 3 PH, 60 Hz, 32.0A
- All Material - Stainless Steel
- System Operation: Negative Pressure
- Lifting Design per NUREG 0612 (Not Tested/Certified)
- Max Operating Temperature: 140 °F
- Empty Weight (Housing and Pump): 650 lb.
- Weight Full of Water (Housing and Pump): 1,725 lb.
- Two 25 Foot 4" Discharge Hoses with Diffusers
- Gravity Seated Pump in Pump Housing
- Low Flow Flux for High Dirt Loading
- Eight Tri Nuclear Filter Cartridges

		Tri Nuclear Corp. P.O. Box 1130, Ballston Lake, NY 12019			
Underwater Filter Unit UF-1000					
Model No.	UF-1000	Rev. Date	Rick Russell 08/25/17	Brochure	
Dwg.	TNC-005-02	Apv'd Date	James L. Warden 08/30/17	Rev. F	Page 1 of 4

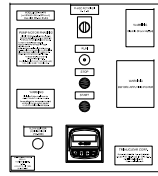
UF-1000OP "UF-1000 OPERATING SYSTEM"



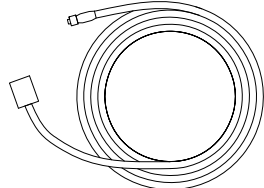
UF-1000H Housing



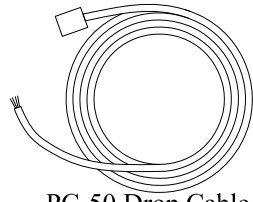
PP-1000SC Pump



CB-1000-FM
Phase Reversing Control Box
with Integral Flow Meter



PSC-100P Power Cord
with Twistlock Plug

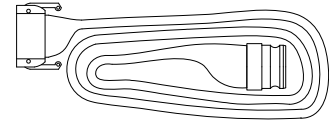


PC-50 Drop Cable
with Twistlock Plug

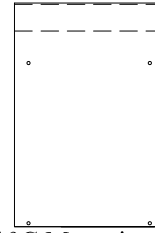
PP-1000SC Pump



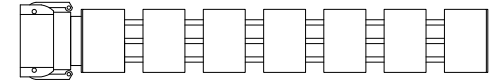
FM-SRD Flow Sensor



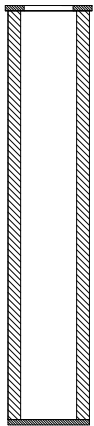
PH-4x25 Discharge Hose
Qty: 2



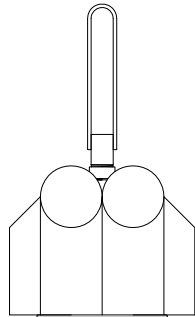
UT-10C Mounting Panel



UT-13 Diffuser Pipe
Qty: 2



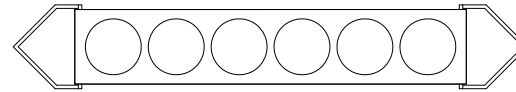
VCPH-*PE Filter Cartridge
NOTE: Not supplied with system.



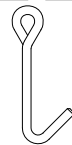
UT-3/6 Filter Storage Rack
Qty: 2



UT-9 Rope Filter Lift Tool
Qty: 2



UT-3H Hanging Filter Storage Rack

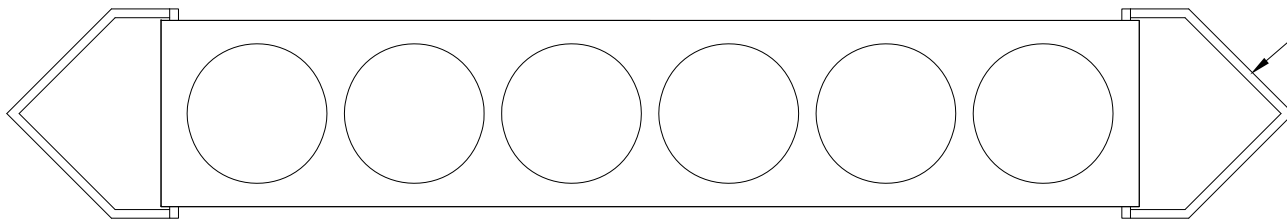


UT-14 Pump Lift Hook

NOTE:

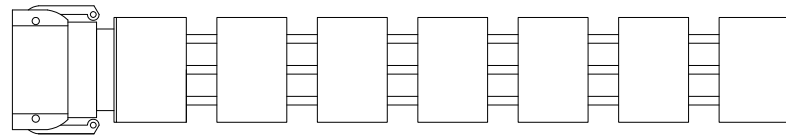
All Items Shown come with the UF-1000 "Complete System" in listed quantity except as noted.

			Tri Nuclear Corp. P.O. Box 1130, Ballston Lake, NY 12019			
UF-1000 System Part Identification						
Model No.	UF-1000	Dwg.	TNC-005-02	Rev.	F	Page 2 of 4

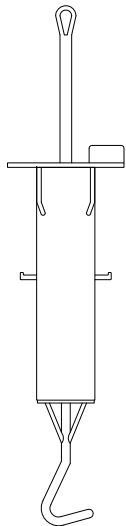


Swing Lift Bail

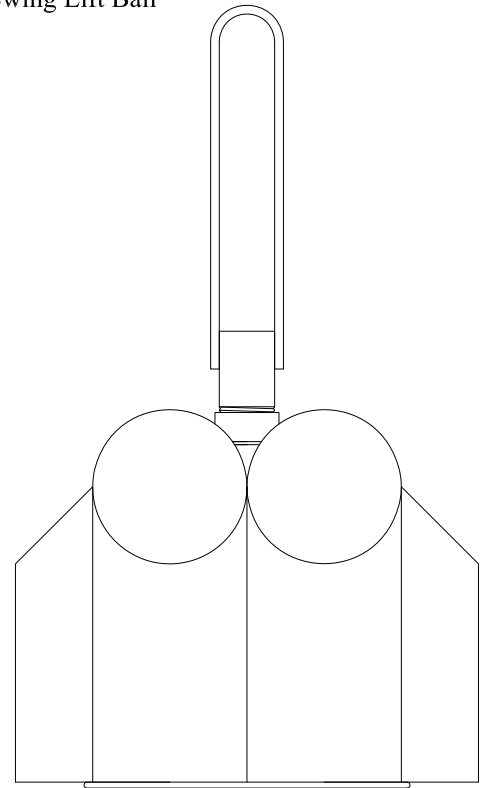
UT-3H Hanging Filter Storage Rack
 Holds (6) Tri Nuclear Filter Cartridges
 Dimensions: 42" x 8" x 2" (LWH)
 Weight: 13.5#



UT-13 Diffuser Pipe
 Attaches to 4" Discharge Hose (Typically PH-4x25)
 Dimensions: 3-1/2" Dia x 33-1/2" Lg.
 Weight: 14#





UT-9 Rope Filter Lift Tool
 Dimensions: 5" Dia x 24-3/4" Lg.
 Weight: 4.5#

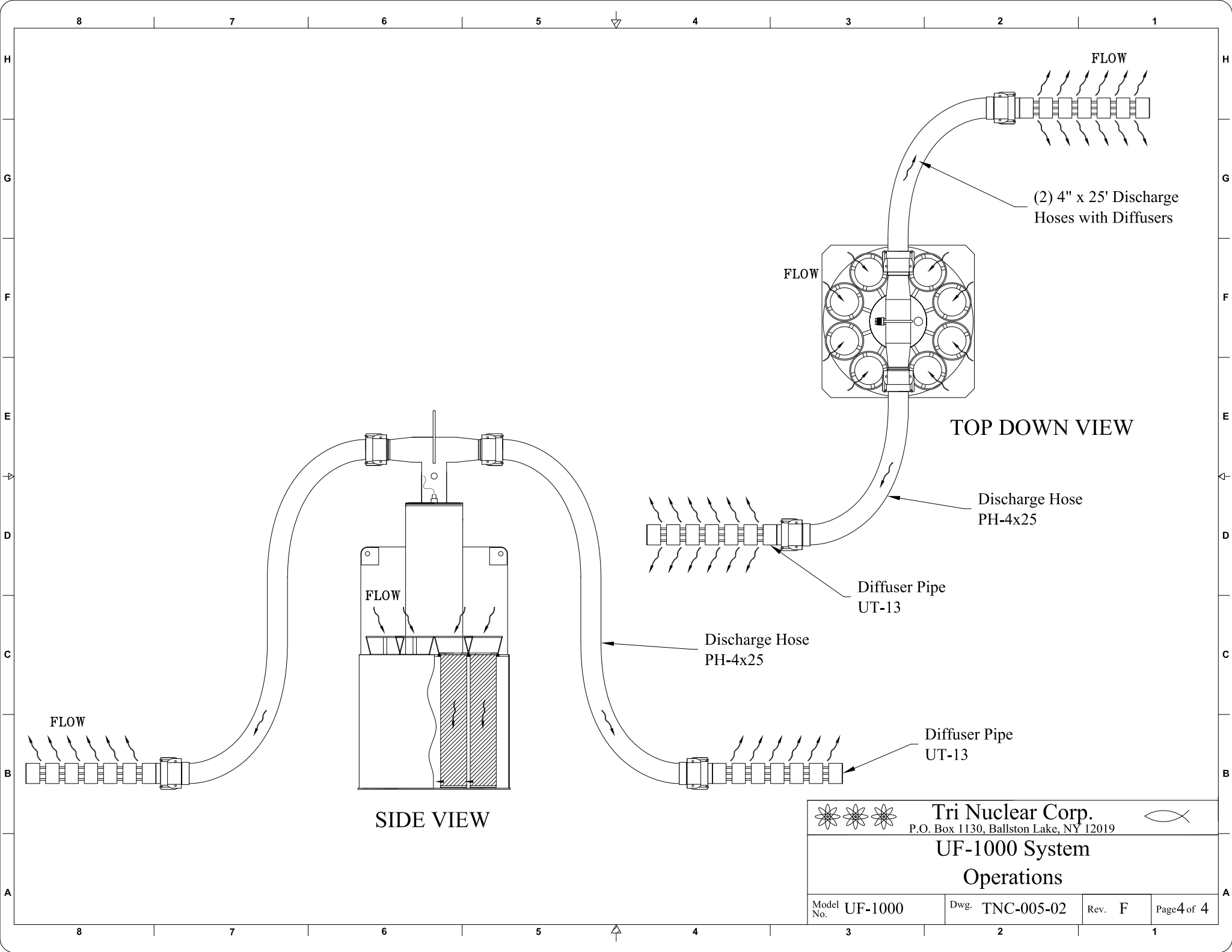


UT-3/6 Filter Storage Rack
 Holds (6) Tri Nuclear Filter Cartridges
 imensions: 20" Dia x 33" High
 Weight: 50#

UT-14 Pump Lift Hook
 Dimensions: 4-1/2" x 5/8" x 8" (LWH)
 Weight: 1#

● All Material - Stainless Steel

 Tri Nuclear Corp. P.O. Box 1130, Ballston Lake, NY 12019			
UF-1000 System Accessory Tooling			
Model No.	UF-1000	Dwg.	TNC-005-02
		Rev.	F
			Page 3 of 4



SIDE VIEW

TOP DOWN VIEW

		Tri Nuclear Corp. P.O. Box 1130, Ballston Lake, NY 12019			
UF-1000 System Operations					
Model No.	UF-1000	Dwg.	TNC-005-02	Rev.	F
				Page 4 of 4	